

SuperFlow Batch 3

Advantages

- Dissolves double concentration of pectin compared to conventional mixers
- Short process time / high capacity
- Low maintenance
- Safe operation
- Compact sanitary design

Standard Features

- High shear mixing
- Water inlet on top
- Manway hatch
- Grid mounted in hatch
- Motor and V-belt drive

Options

- Direct heating: Custom number of valves
- Indirect heating up to 60 degrees C
- Cooling
- Frequency inverter on mixer
- Insulation

Materials

Parts in contact with the product are made from stainless steel AISI 316L. Other parts are made from AISI 304.

Unit Specifications:

Maximum temperature: 100 degrees Celsius when insulated.

Consumption data

Power supply 380-480 V, 50/60 Hz
Shaft seal water turbo unit, l/h 10-15.



Product volume liter	250	500
Total volume liter	445	735
Steam direct Kg/h	75-225	75-300
Mixer motor kW min.	11-15/ 20-26	22/ 37,5
Mixer	190	190
Air (Bar) *	6	6
Weight kg	396	690
L x W x H (mm)	1700 x 950 x 1900	1775 x 1070 x 2200
Manway height (mm)	1385	1625

Alternative design and sizes available on request.

Sol 3 - 250L



The Sol 3 is specially designed for dissolving powders fast without “fish eyes” or lumps. The powders are added from the top. This mixer is typically used for pre-mixing. Suitable for production where manually cleaning is preferred.

Advantages:

1. Short process time
2. Dissolves double concentration of pectine compared to conventional mixers
3. Changeable mixing tools

Effective volume in litre: 200, 250, 300, 400, 500

Standard features:

- High shear mixing
- Water inlet on top
- Hinged lid

Options:

- Direct heating
- Indirect heating (60 degrees)
- Cooling
- Frequency inverter on mixer

Mixer footprint in millimeters (mm)

Size	Length	Width	Filling Height
200 l.	1520	870	780
250 l.	1580	960	880
300 l.	1680	1000	980
400 l.	1680	1000	1130
500 l.	1690	1000	1190

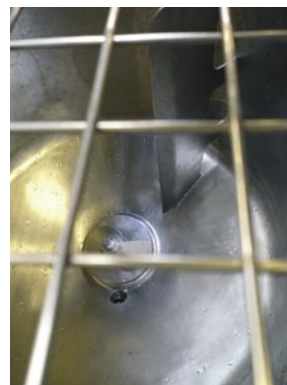
Unit Specifications: Maximum temperature: 100 degrees Celcius.
The total height is +500 mm on the filling height.

	200 Liter Ø190	250 Liter	300 Liter	400 Liter	500 Liter Ø190	500 Liter Ø290
Steam direct Kg/hr.	150	225	225	225	300	300
Steam indirect Kg/hr.	90	110	130	165	200	200
Mixer motor kW min.	15	15	15	18,5	22	30
Air (Bar) *	6	6	6	6	6	6
Amp supply	40	40	40	50	63	75
Voltage	380-415V/ 3ph 50Hz	380-415V/ 3ph 50Hz	380-415V/ 3ph 50Hz	380-415V/ 3ph 50Hz	380-415V/ 3ph 50Hz	380-415V/ 3ph 50Hz
Weight kg	375	425	475	550	600	700

*Only needed in combination with air actuators.



Sol 3 - 250L



Sol 3 - 100L



Limitech A/S, Frstrupvej 162-164, DK-9440 Aabybro, Denmark, Phone.: +45 98 24 31 44
Fax.: +45 98 24 31 60, E-mail: limitech@limitech.dk, www.limitech.dk



Exclusive Agent
Mobile: +66 952823935
Mail: ozzago@ozzago.com
www.ozzago.com