

WOLTMAN BULK WATER METER (50°C)

MODEL LXLG 50 - 200 mm



Application :

This series of large-size Japanese-design imported water meters is mainly used for measuring the total quantity of cold potable water passing through pipelines in waterworks, mining & industrial enterprises.



Features :

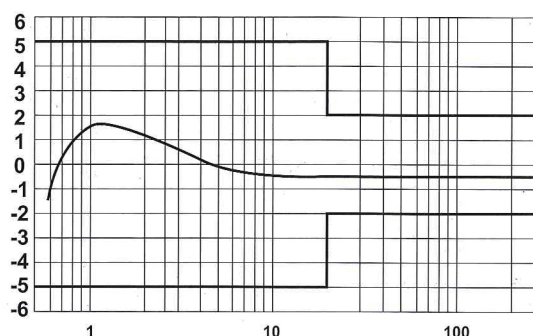
- Body in Cast Iron or Stainless Steel 316 (option)
- Horizontal Helix Woltman Type
- Removable mechanism for facilitating installation and maintenance
- Long-term clear reading, dry-type register
- Interchangable parts
- Magnetic transmission with anti-magnetic protection system
- Low transmission resistance
- Reliable high sensitivity, small pressure loss
- Measuring accuracy according to ISO 4064 standard
- Optional pulse output signal available
- Easily cleanable plastic strainer provided at the meter inlet
- Water temperature : $\leq 40^{\circ}\text{C}$ for cold potable water
- Water pressure : $\leq 1\text{ MPa}$ or $\leq 1.6\text{ MPa}$ (option)

Metrological data :

Dia.	Flowrate - ISO 4064:1993 - Class B (m ³ /h)				Flowrate - ISO 4064:2005 (m ³ /h)					Min Reading	Max Reading
	Q _{max}	Q _p	Q _t	Q _{min}	Q ₃ /Q ₁	Q ₁	Q ₂	Q ₃	Q ₄		
50	30	15	3	0.45	80	0.313	0.50	25	31.25	0.001	999999.999
65	50	25	5	0.75	80	0.50	0.80	40	50		
80	80	40	8	1.20	80	0.788	1.26	63	78.75		
100	120	60	12	1.80	80	1.25	2	100	125		
125	200	100	20	3.00	80	2	3.20	160	200		
150	300	150	30	4.50	50	5	8	250	312.5		
200	500	250	50	7.50	40	10	16	400	500		

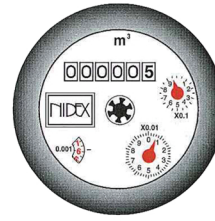
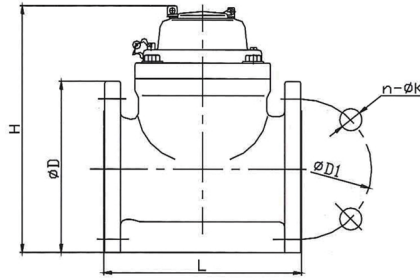
Flow error curve :

Accuracy (%)



% to Q_p

Dimensions and Weights :



Dia. mm	Length L mm	Length <H mm	Weight kg	Connecting flange		
				Flange Outer Dia. D(mm)	Bolt Circle Dia. D1(mm)	No. and Dia. of the flange hole(mm)
50	200	210	10.0	165	125	4-Ø19
65	200	256	11.6	185	145	4-Ø19
80	225	280	15.4	200	160	8(4)-Ø19
100	250	290	18.6	220	180	8-Ø19
125	250	310	21.6	250	210	8-Ø19
150	300	320	31.5	285	240	8-Ø23
200	350	364	46.0	340	295	8(12)-Ø23

Installation Requirements :

The water meter's installation must conform to ISO4064-2 standard.

1. Before installation, the diameter of the pipeline and the usual flow rate must be identified. Select the meter which the usual flow rate closes to the nominal flow rate.
2. For a newly-installed pipeline, flush the pipeline to clear out foreign matters, such as pebbles, silt, asphalt and etc. before installing the water meter.
3. To prevent damages from big particles in the water, a strainer should be installed before the inlet of the water meter and should be cleaned regularly.
4. The water meter must be installed coaxially with the upstream and downstream pipes to prevent excessive stress to the meter. Don't let the gaskets protrude into the pipes.
5. The meter shall be installed horizontally and vertically.
6. Valves should be installed at the upstream and downstream of the water meter for easy maintenance.

WOLTMAN BULK WATER METER (50°C)

MODEL LXLG 250 - 400 mm



Features :

- Large-flow capacity with small pressure loss
- Efficient and reliable from high quality materials
- Magnetic-drive, dry-type register protected by a steel cover, always clear and legible
- 360 Degree rotatable register
- Removable mechanism, easy to repair without removing the meter body from the pipeline.
- Optional pulse output signal available for remote reading

Metrological data :



Dia.	Flowrate - ISO 4064:1993 - Class B (m ³ /h)				Flowrate - ISO 4064:2005 (m ³ /h)					Min Reading	Max Reading	Length (mm)	Width (mm)	Height (mm)
	Q _{max}	Q _p	Q _t	Q _{min}	Q ₃ /Q ₁	Q ₁	Q ₂	Q ₃	Q ₄					
250	800	400	80	12	40	15.75	25.2	630	787.5	0.01	99999999	460	420	660
300	1200	600	120	18	40	25	40	1000	1250	0.01	99999999	500	492	660
400	2000	1000	200	30	25	64	102.4	1600	2000	0.1	99999999	600	631	750

WATER METER

NIDEX

OZZAGO Co.,Ltd.



12, Soi Ladprao 80, Yak 20, Ladprao Rd,
Wangthonglang, Bangkok 10310, Thailand
Mobile: +66 95 2823935
E-mail : ozzago@ozzago.com
Web : www.ozzago.com